

EXQUISITE 4-BEDROOM PENTHOUSE: A
SKY-HIGH SANCTUARY OF LUXURY AND
ELEGANCE

3 950 000 €

Property Code:	6626	Type:	Sale - Apartment
Location:	Limassol - POTAMOS GERMASOGIA	Internal Area:	155 m²
Bedrooms:	4	Bathrooms:	4+
Number of floors:	26	Heating:	Underfloor heating
Distance to the sea:	25 m	Distance to airport:	65 km
Status:	New	VAT:	+ VAT
Uncovered verandas, m²:	22	Covered verandas, m²:	60

Property features:

Air Conditioning	Common Pool	Covered Parking	Elevator
Furnished	Gym	Kid's Play Area	Penthouse
Sauna	Sea View	SPA	Storage
Under Floor Heating	Heating	Air Condition	Parking - Covered
Furnished	Store Room	Solar panels for hot water	Double Glazing
Maids Room	Oven	Washing machine	Dish washer
Cooker	Extractor Fan	Parking	Refrigerator
Balcony	Furniture		

Description:

Discover the ultimate in luxury living, an exquisite residence perched on one of the top floors of the prestigious Limassol complex. This penthouse offers panoramic views, opulent interiors, and access to world-class amenities, making it the perfect sanctuary in the heart of Limassol.

Key Features:

- Prime Location:** High floor offering unparalleled sea and city views.
- Expansive Space:** Total covered area of 337 m², providing ample room for relaxation and entertainment.
- Interior Area:** 155 m² of beautifully designed living space.
- Elegant Verandas:** 60 m² covered veranda and 22 m² uncovered veranda for enjoying the Mediterranean climate.
- Private Planters:** 14 m² of lush greenery, enhancing your private outdoor space.
- Bedrooms:** 3 luxurious bedrooms plus a maid's room, ensuring comfort and privacy.
- Bathrooms:** 5 stylishly appointed bathrooms, including a master en-suite with a whirlpool bath.

Interior Highlights:

Gourmet Kitchen: Italian-designed by Arclinea, featuring top-of-the-line Miele appliances,

EXQUISITE 4-BEDROOM PENTHOUSE: A SKY-HIGH SANCTUARY OF LUXURY AND ELEGANCE

3 950 000 €

Caesarstone countertops, and custom cabinetry with soft-closing mechanisms.

Sophisticated Finishes: High-quality Atlas Concorde tiles and engineered wood floors, with a herringbone design in the bedrooms for added elegance.

Lavish Bathrooms: Outfitted with Duravit sanitary ware, Hansgrohe mixers, tempered glass shower cubicles, and floor-to-ceiling tiles. The master bathroom includes a whirlpool bath, shower body jet, and rain shower feature.

Smart Home Integration: Advanced smart home system with tablet connection, wall-mounted monitor, integrated speakers, sound system, and A/C monitors for ultimate convenience and control.

Exclusive Building Amenities:

Five-Star Development: Offering integrated services and top-tier amenities for an unparalleled living experience.

Grand Lobbies: Main entrance lobby and a private residents' lobby that exude sophistication.

Leisure Facilities: Enjoy the on-site bistro and bar, indoor swimming pool, state-of-the-art gym, and luxurious spa.

Premium Shopping and Dining: Access to building's exclusive shopping and dining destinations.

Additional Details:

Parking: Two allocated spaces for secure and convenient parking.

Storage: Private storage space included.

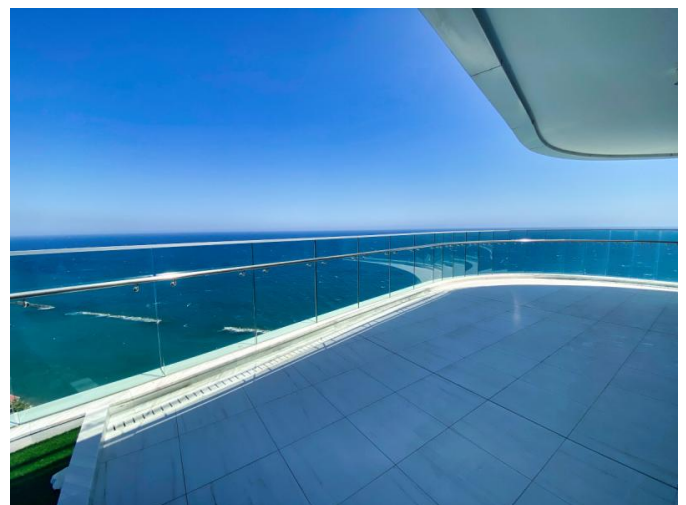
Security: Enhanced security features including a custom-made main entrance door with a hardwood frame and solid wood leaf, equipped with a security lock.

Embrace the epitome of luxury living in Limassol. This stunning residence is not just a home, but a lifestyle. With its breathtaking views, meticulously crafted interiors, and access to exclusive amenities, this penthouse offers an unparalleled living experience.

Contact us today to arrange a private viewing and step into the world of the extraordinary.

**EXQUISITE 4-BEDROOM PENTHOUSE: A
SKY-HIGH SANCTUARY OF LUXURY AND
ELEGANCE**

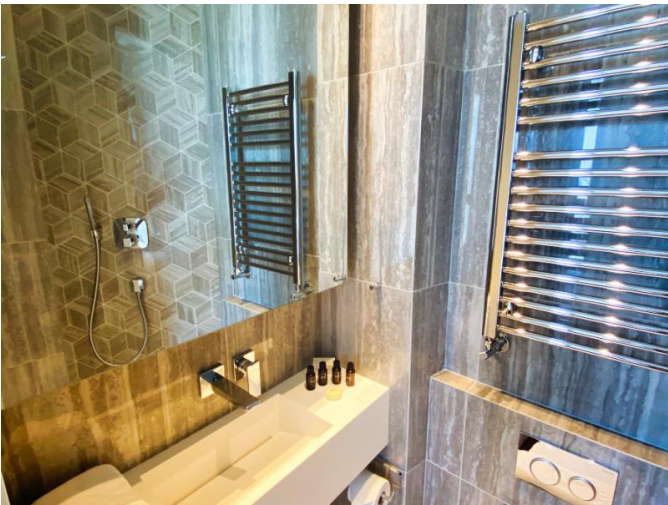
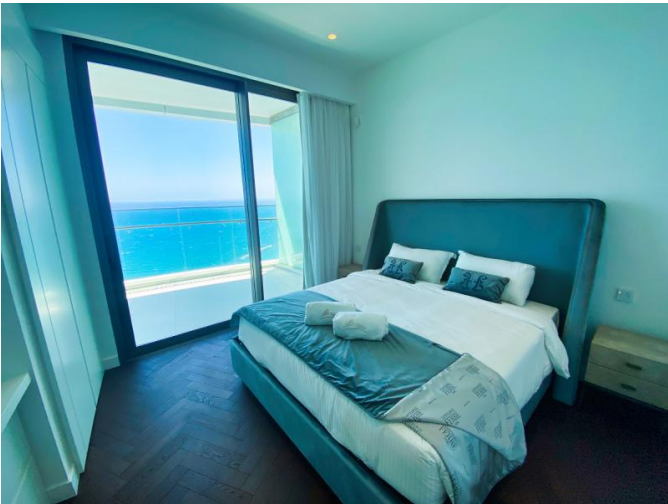
3 950 000 €



**EXQUISITE 4-BEDROOM PENTHOUSE: A
SKY-HIGH SANCTUARY OF LUXURY AND
ELEGANCE**

.....

3 950 000 €



**EXQUISITE 4-BEDROOM PENTHOUSE: A
SKY-HIGH SANCTUARY OF LUXURY AND
ELEGANCE**

.....

3 950 000 €



EXQUISITE 4-BEDROOM PENTHOUSE: A SKY-HIGH SANCTUARY OF LUXURY AND ELEGANCE

3 950 000 €

