

PENTHOUSE FURNISHED ACROSS THE BEACH

899 000 €

Property Code:	196	Type:	Sale - Apartment
Location:	Limassol - POTAMOS GERMASOGIA	Internal Area:	172 m ²
Bedrooms:	3	Bathrooms:	2
Distance to the sea:	50 m	Distance to airport:	65 km
Status:	Resale	VAT:	Not applicable

Property features:

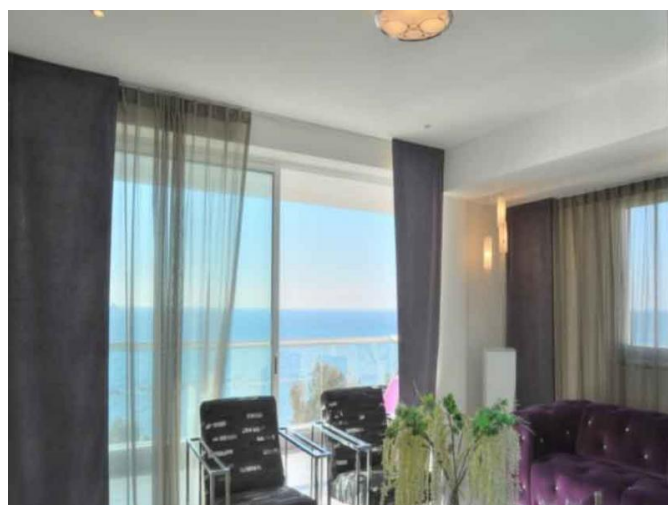
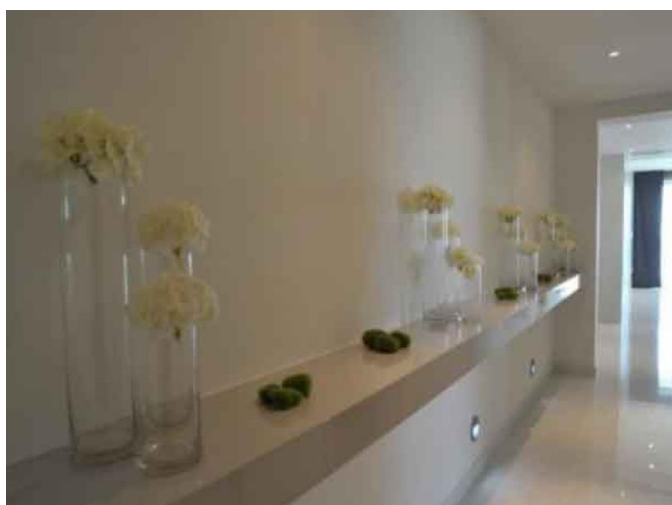
Common Pool	Air Condition	Parking - Covered	Telephone Line
Furnished	Store Room	Solar panels for hot water	Double Glazing
Parking	Balcony	Furniture	

Description:

Located in this unique development in a prime location in Limassol combining comfort and beauty and overlooking the Mediterranean Sea. The complex is surrounded in a lush green environment with beautiful mature gardens and palm trees providing the development a true Mediterranean style. It is situated near the tourist area on the seafront avenue of Limassol with direct access to sandy beaches and within walking distance of amenities. It also offers easy access to the highway and to the central business district of Limassol. The beauty of the place and the wonderful setting makes the penthouse a very attractive home for a lifetime of comfort and enjoyment. The penthouse is located in the front side of the resort area opposite the beach. Concierge services are offered and a gym with shower facilities is also situated in the building.

PENTHOUSE FURNISHED ACROSS THE BEACH

899 000 €



PENTHOUSE FURNISHED ACROSS THE BEACH

899 000 €

