

## MODERN ONE BEDROOM FLAT IN 250M FROM DASOUDI

1 200 €/month

<b>Property Code:</b>	3315	<b>Type:</b>	Long-term rent - Apartment
<b>Location:</b>	Limassol - POTAMOS GERMASOGIA	<b>Internal Area:</b>	87 m <sup>2</sup>
<b>Bedrooms:</b>	1	<b>Bathrooms:</b>	1
<b>Renovation:</b>	Modern	<b>Year of construction:</b>	2019
<b>Distance to the sea:</b>	250 m	<b>Distance to airport:</b>	60 km

### Property features:

Air Condition	Parking - Covered	Telephone Line	Furnished
Solar panels for hot water	Double Glazing	Garden	Oven
Washing machine	Dish washer	Cooker	Extractor Fan
Parking	Refrigerator	Balcony	

### Description:

#### MODERN ONE-BEDROOM FLAT IN 250M FROM DASOUDI

For rent a one-bedroom apartment in a modern complex with amenities just 250 meters from Dasoudi beach and park.

The layout includes the living room with an open kitchen, 1 bedroom with wardrobes, a bathroom, and a covered veranda. All high specs a/c, double windows, security.

The building is placed in a very quiet area of Papas supermarket and has all access to the main road or highway.

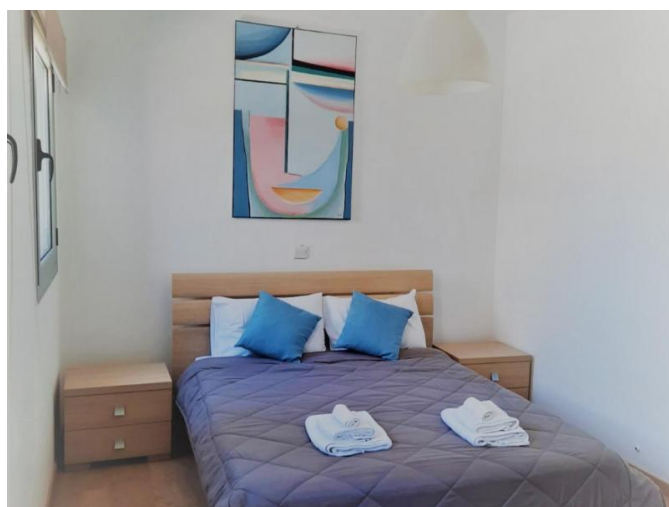
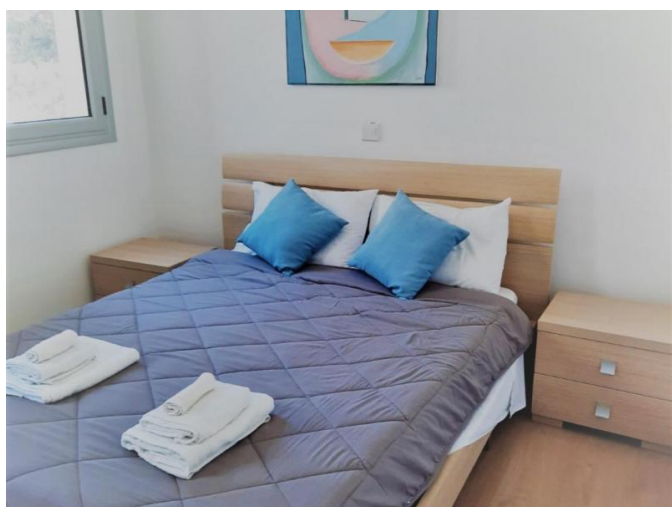
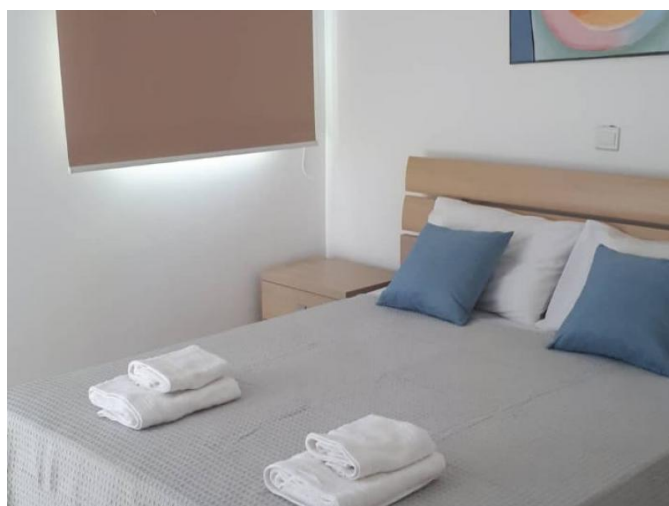
**MODERN ONE BEDROOM FLAT IN 250M  
FROM DASOUDI**

1 200 €/month



# MODERN ONE BEDROOM FLAT IN 250M FROM DASOUDI

1 200 €/month



**MODERN ONE BEDROOM FLAT IN 250M  
FROM DASOUDI**

---

1 200 €/month



---

10.01.2025