

# BRAND NEW 2-BEDROOM TOWNHOUSE NEAR THE SEA

690 000 €

<b>Property Code:</b>	5941	<b>Type:</b>	Sale - House/Villa
<b>Location:</b>	Limassol - POTAMOS GERMASOGIA	<b>Internal Area:</b>	121 m <sup>2</sup>
<b>Plot Area:</b>	149 m <sup>2</sup>	<b>Bedrooms:</b>	2
<b>Renovation:</b>	Modern	<b>Number of floors:</b>	2
<b>Heating:</b>	Underfloor heating	<b>Distance to the sea:</b>	400 m
<b>Distance to airport:</b>	65 km	<b>VAT:</b>	+ VAT
<b>Uncovered verandas, m<sup>2</sup>:</b>	25		

## Property features:

Air Conditioning	Communal Pool	Furnished	Shutters
Storage	Under Floor Heating	Air Condition	Telephone Line
Solar panels for hot water	Double Glazing	Cooker	Parking
Balcony	Furniture		

## Description:

The townhouse located at the heart of Limassol's tourist area is a striking new project with impressive design details, just 400 metres from the sea. Created to offer an affluent island lifestyle to all residents through a carefully laid out complex which is close to all necessary amenities, it includes 3 apartment blocks and 4 semi-detached houses.

Features:

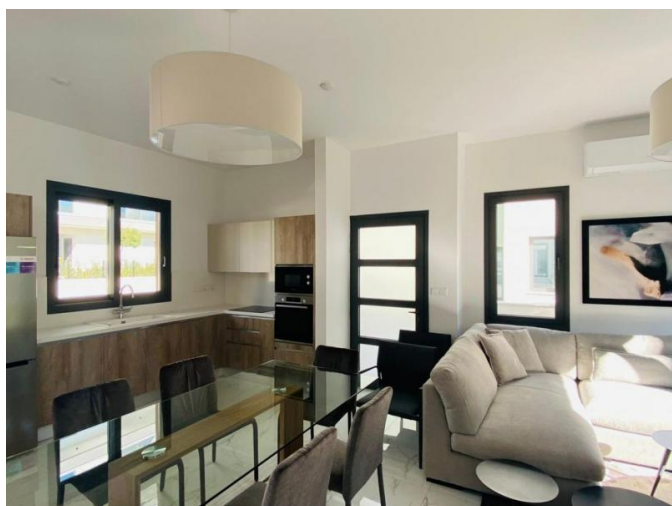
- Spacious 2 beds
- 2 WC
- Plot size 149 SQM
- Modern Italian furniture
- Bosch Electrical appliances
- A/C units
- Some sea view
- Parking for 2 cars
- Underfloor heating
- Store room
- Total area 121 SQM
- Solar system hot water
- Common swimming pool
- Small playground

**BRAND NEW 2-BEDROOM TOWNHOUSE  
NEAR THE SEA**

---

690 000 €

- Electric shutters in beds



**BRAND NEW 2-BEDROOM TOWNHOUSE  
NEAR THE SEA**

---

690 000 €

