

3-BEDROOM DUPLEX APARTMENT WITH COMMON POOL & GYM

3 350 €/month

Property Code:	5944	Type:	Long-term rent - Apartment
Location:	Limassol - PAREKKLISIA	Internal Area:	115 m ²
Bedrooms:	3	Renovation:	Modern
Number of floors:	5	Distance to the sea:	400 m
Distance to airport:	60 km		

Property features:

Air Conditioning	Common Pool	Furnished	Swimming Pool
Air Condition	Parking - Covered	Telephone Line	Store Room
Solar panels for hot water	Double Glazing	Cooker	Refrigerator
Balcony			

Description:

This 140 square-meter apartment is situated towards the end of the Limassol Touristic Area in Parekklesia. With easy access to the motorway, within walking distance from the beach as well as everyday amenities in the proximity of the apartment, the location of the apartment is easily considered an advantage. Its location is ideal for anyone that requires peace and tranquillity in an evolving scenery.

Apart from its location of it, this duplex apartment highlights contemporary architecture while it consists of a spacious interior through the living area and the three bedrooms. Once entering the apartment, one walks by the guest WC to reach the living room area. On the right, in an open-plan layout are the kitchen and dining area. The floor is completed on the balcony before moving to the bedroom floor below. The bedroom floor consists of three bedrooms, one of which is ensuite and with a balcony, and the family bathroom that can serve the needs of the other two bedrooms.

The apartment is part of a development, that offers a communal swimming pool that can be utilized by the residents, while in a different part of the project, a communal gym and a small kid's playground can be found.

Monthly Rental Fee: €3350 (Common expenses are NOT INCLUDED)

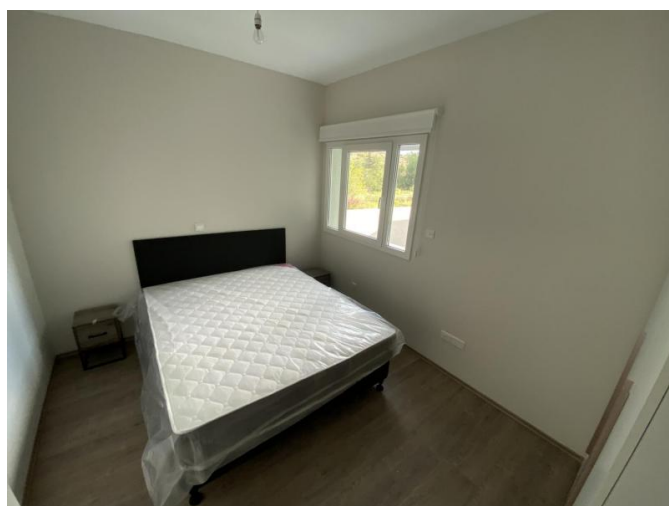
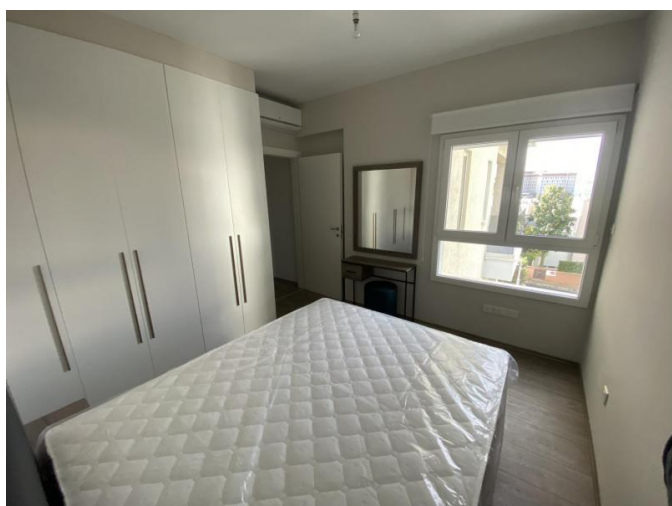
3-BEDROOM DUPLEX APARTMENT WITH COMMON POOL & GYM

3 350 €/month



3-BEDROOM DUPLEX APARTMENT WITH COMMON POOL & GYM

3 350 €/month



3-BEDROOM DUPLEX APARTMENT WITH COMMON POOL & GYM

3 350 €/month

